



tile & stone  
Installation Systems

## ARDEX Products Assembly

### 1. Grout Options:

- A. ARDEX WA™ Epoxy Grout and Adhesive
- B. ARDEX FL™ Rapid Set, Flexible Sanded Grout
- C. ARDEX FG-C™ MICROTEC® Unsanded Grout

### 2. Latex-Portland Cement Bond Coat:

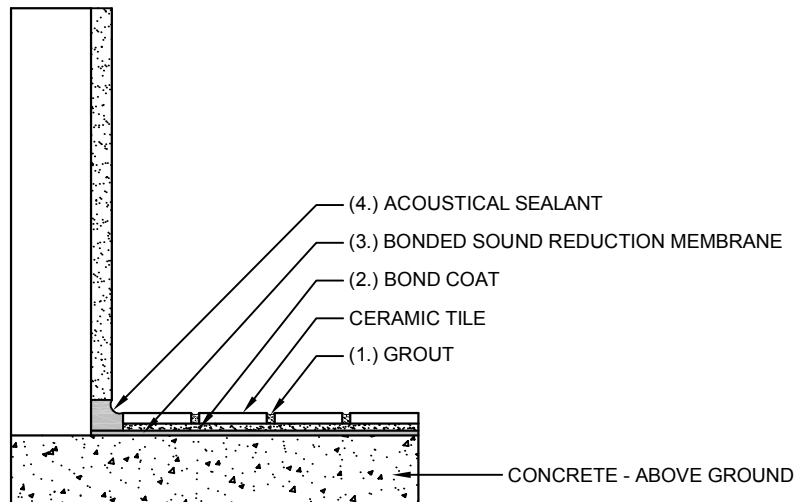
- A. ARDEX X 77™ MICROTEC® Fiber Reinforced Thin Set Mortar

### 3. Sound Reduction Membrane:

- A. ARDEX D70™ Sound Deadening Mat

### 4. Acoustical Sealant:

- A. ARDEX D70™ Sound Deadening Mat - Perimeter Strip



Scale: N.T.S.

Drawings are developed to be compatible with Tile Council of North America 2013 TCNA Handbook for Ceramic, Glass and Stone Tile Installation.

ARDEX products are listed as options and are substituted for TCA's and TTMAC's listed ANSI and ISO 13007 standards. Please refer to the Tile Council of North America 2013 TCNA Handbook for Ceramic, Glass and Stone Tile Installation for complete instructions and application limitations.

Some installation methods and component materials are not referenced. ARDEX Americas encourages the user to consult all approved resources to ensure a complete assembly.

ARDEX Americas  
400 Ardex Park Drive  
Aliquippa, PA 15001

Technical Services:  
1-800-512-7339  
[www.ardexamericas.com](http://www.ardexamericas.com)



Interior Floors  
Over Concrete

Above-Ground Concrete, Bonded Sound  
Reduction Membrane, Ceramic Tile

**AF136-13**

TCNA: F136-13  
TTMAC: NA