



ARDEX SYSTEM SOLUTIONS

Product Guide

www.ardexamericas.com • www.wwhenry.com



HENRY

BUILT BY
YOU
backed by **ARDEX**



LEADING PLAYER
 IN WORLD MARKETS
 HIGH-PERFORMANCE
 SPECIALTY BUILDING
PRODUCTS
 FAMILY-OWNED
BUSINESS



ARDEX Production Facility
 Stockton, CA

VISION

The ARDEX Group is the leading solution and service provider of innovative building systems.

PERFORMANCE

ARDEX delivers time-tested solutions for the most complex installation problems. We strive for market leadership in defined markets worldwide. ARDEX Americas, serving the US, Canada and Latin America, stands for German Engineering made in North America.

SYSTEM SOLUTIONS

As an experienced industry partner, we are committed to providing the highest quality materials designed with the installer in mind. We derive our inspiration from you, our customers.

71
 SUBSIDIARIES

3,900
 EMPLOYEES

50+
 COUNTRIES

18+
 MAJOR BRANDS



ARDEX AMERICAS
 HEADQUARTERS
 Aliquippa, Pennsylvania, USA



ARDEX GROUP
 HEADQUARTERS
 Witten, Germany



TABLE OF CONTENTS



**SELF-LEVELING
UNDERLAYMENTS**



**MOISTURE CONTROL
& PRIMERS**



**PATCHING
COMPOUNDS**



**FINISHED
SURFACES**



**FLOORING
ADHESIVES**



**TILE & STONE
INSTALLATION SYSTEMS**



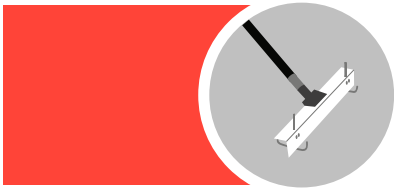
**ENGINEERED CONCRETE
REPAIR SYSTEMS**



**ARDEX CONCRETE
MANAGEMENT SYSTEMS™**



**ARDIFLO™
PUMPING SYSTEMS**




SELF-LEVELING UNDERLAYMENTS



ARDEX V 1200™
Self-Leveling Underlayment
Sous-couche autonivelante
Base autonivelante

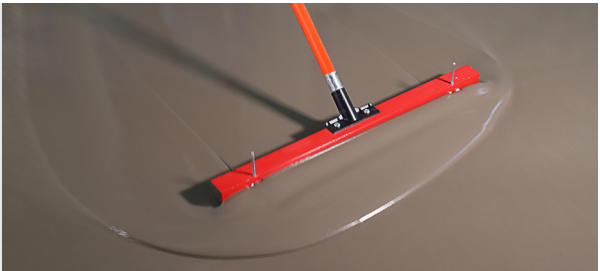

50 lbs 22.7 kg net

ARDEX Americas pioneered self-leveling underlayments in the US marketplace in 1978, and revolutionized the industry. Today our self-levelers are the industry benchmark for contractors, architects, and installers.



ARDEX K 40™ RAPID
Rapid, High Flow Self-Leveling Underlayment
Sous-couche autonivelante à haute élévation
Base autonivelante de secado rápido y alta fluidez

50 lbs 22.7 kg net

ARDEX K 60™ ARDITEX
Rapid Setting Latex Smoothing and Leveling Compound
Compuesto de nivelación y pulido de secado rápido para acabados y alisado

35 lbs 15.8 kg net



MORE SELF-LEVELING UNDERLAYMENTS:

ARDEX K 15®
ARDEX K 13™

ARDEX K 10™
ARDEX V 1000™

ARDEX K 22 F™
ARDEX K 34™

MOISTURE CONTROL & PRIMERS



ARDEX MC™ RAPID
One-Coat Moisture Control
System for Concrete to
Receive ARDEX Products

ARDEX Americas delivers one and two-coat moisture control systems to address problematic moisture vapor emissions in concrete. Our moisture control systems are easy-to-apply, provide superior coverage, and are backed by industry-leading warranties.



ARDEX VB 100™
Fast-Track, One-Component
Moisture Vapor Retarder



PRIMERS:



ARDEX P 4™
Premixed, Rapid-Drying,
Multipurpose Primer



MORE PRIMERS:

ARDEX P 82™

ARDEX P 51™

ARDEX EP 2000™



PATCHING COMPOUNDS

ARDEX FEATHER FINISH®
Self-Drying, Cement-Based
Finish Underlayment

With the launch of ARDEX FEATHER FINISH® nearly 30 years ago, ARDEX was established as the leading provider of high-quality patching compounds. Count on our patches to eliminate flooring installation problems associated with disbonding, crumbling, mold, mildew and staining.

ARDEX MRF™
Moisture-Resistant, Rapid-Drying,
Skimcoat Patching Underlayment

ARDEX SKM™
Skimcoat Patch &
Finishing Underlayment

MORE PATCHING COMPOUNDS:

ARDEX **SD-P®**

ARDEX **FORTI FINISH™**

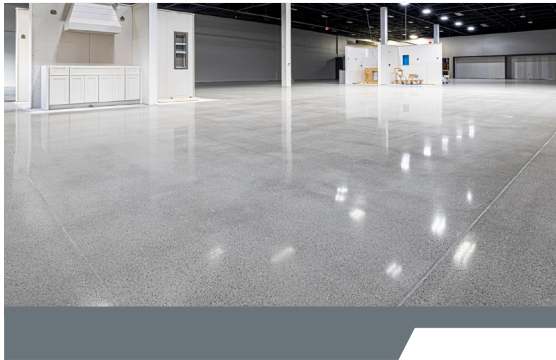
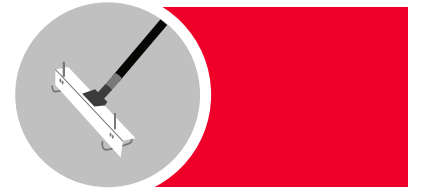
ARDEX **GPS™**

ARDEX **SD-P® LT**

ARDEX **FEATHER FINISH® XF™**



FINISHED SURFACES



ARDEX K 525™
Self-Leveling Concrete Topping
with Dark Aggregate Surface

Green benefits and lower life cycle costs are just a few reasons why the industry is trending toward concrete finished surfaces. Suitable for both commercial and residential applications, ARDEX provides high-performing products that allow for a wide array of finished surfaces.



ARDEX SD-M™
Designer Floor Finish™



ARDEX PC-T™
Polished Concrete Topping



MORE FINISHED SURFACES:

ARDEX **K 520™** ARDEX **K 530™** ARDEX **SD-T®**
ARDEX **K 521™** ARDEX **K 301™** ARDEX **K 523™**

panDOMO®

A modern system for concrete surface designs that keeps all architectural possibilities open.
www.ardex-pandomo.com



FLOORING ADHESIVES



HENRY® Gription
Universal Vinyl Flooring Adhesive

HENRY®, a brand of ARDEX Americas, is one of the world’s leading manufacturers of adhesives for all types of flooring installation. HENRY® offers innovative products designed for today’s flooring installation professional with performance backed by unmatched technical service and the ARDEX SystemOne™ Flooring Warranty. Our adhesives additionally lead the way with environmental certifications independently issued by the RFCI FloorScore® testing program.



HENRY® 647 PlumPro™
Fast-Track, Roll-ApPLY Adhesive



HENRY® 650 R
Releasable Bond Pressure Sensitive Adhesive



HENRY® 430 ClearPro™
Clear VCT Floor Adhesive





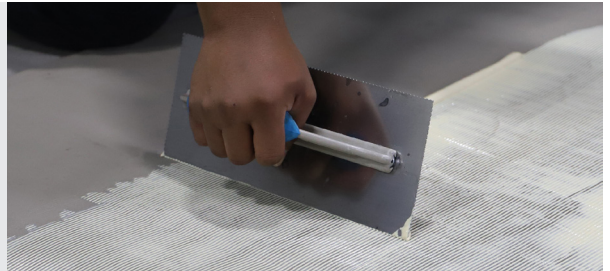
HENRY® 1171N SureLock™
Acrylic Urethane Wood
Flooring Adhesive



HENRY® 351 FastPro™
Fast Grab, Pro Grade
Carpet Adhesive



HENRY® 695
High RH Vinyl Flooring Adhesive



MORE FLOORING ADHESIVES:

HENRY® **2575** Floor & Wall MS-based Adhesive

HENRY® **440** Cove Base

HENRY® **256** Dual Purpose Carpet and Sheet Flooring Adhesive

For more information please visit www.ardexamericas.com.



systemONE™
warranty

A complete flooring installation solution for ARDEX and HENRY backed by the most comprehensive full replacement warranty in the industry. For more information, visit www.systemonesolutions.com



TILE & STONE INSTALLATION SYSTEMS



ARDEX X 77™

MICROTEC® Fiber Reinforced
Tile and Stone Mortar

ARDEX is the industry innovation leader offering a comprehensive line-up of German engineered, high-performance tile and stone installation systems formulated specifically with the installer in mind. For over 60 years, installers have relied on the tangible job site benefits to minimize the time, cost and risk of an installation.



ARDEX UI 740™ FLEXBONE® Uncoupling Membrane



ARDEX FL™ Rapid Set, Flexible, Sanded Grout

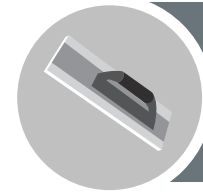


MORE TILE & STONE INSTALLATION PRODUCTS:

ARDEX **Exterior Tile & Stone Systems**
ARDEX **TLT™ Shower Systems**
ARDEX **DG 1™**


ARDEX **X 5™**
ARDEX **S 1-K™**
ARDEX DTA **Quality Tools**

ENGINEERED CONCRETE REPAIR SYSTEMS (ECRS)

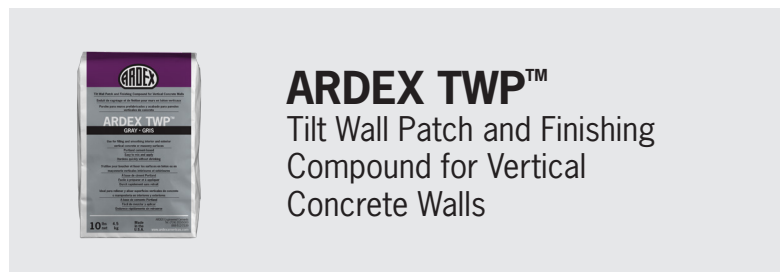


ARDEX CD™
Concrete Dressing

ECRS is a complete product line for structural and non-structural repairs; exterior wear surface repair and restoration; horizontal, vertical and overhead repairs; crack repair and joint sealing. ECRS products provide comprehensive restoration capabilities for almost every application.



ARDEX CP™
Concrete Patch



ARDEX TWP™
Tilt Wall Patch and Finishing
Compound for Vertical
Concrete Walls

MORE ENGINEERED CONCRETE REPAIR SYSTEMS:

ARDEX **B 24™**

ARDEX **CG™**

ARDEX **BACA™**

ARDEX **B 40™**

ARDEX **OVP™**

ARDEX **B 20™**

ARDEX CONCRETE MANAGEMENT SYSTEMS™

ARDEX Concrete Management Systems™ (ACMS) is a patented (US Patent 8,857,130 B1), specified finishing method for new concrete construction that addresses challenges like moisture, flatness and levelness. It is comprised of seven steps, and includes an integrated system of moisture control and self-leveling underlayment products. ACMS resolves issues that arise during construction due to the disparity between Division 3 (concrete) and Division 9 (finishes). It can narrow the slab cure window to just a few days.

The ACMS rough screed process option can be combined with ARDIFLO™ pumping systems, allowing you to meet the most demanding flatness and levelness tolerances for flooring and other interior trades.



ARDIFLO™ PUMPING SYSTEMS

ARDEX' ARDIFLO™ Pumping Systems provide floor leveling solutions to increase efficiency and productivity on your next installation. Our standard, medium, and high-capacity pumping systems are available with a broad range of training and support systems, tailored warranties and contractor programs. Find out which of our innovative pump systems is right for you.



ARDIFLO™ PUMPING SYSTEMS:

POWERFLO®
ROVER®

MID-CAPACITY PUMP
ARDEX HC 100™

AMP® 200

For more information please visit www.ardexardiflo.com



TECHNICAL FOUNDATION

ARDEX Americas technical training programs and seminars have been recognized as the best in the industry. For over 40 years, our trainings provide classroom and hands-on learning where attendees work directly with ARDEX high-performance products. They learn the newest installation techniques allowing them to return to the job site with the latest knowledge and skills necessary to increase job efficiency and help ensure installation success.

TRAINING EXPERTISE

Count on our expert team to provide you with the ins and outs of installing our products to industry standards. Whether you are an installer, an architect or a distributor, you will always benefit from seminars tailored to your needs. In addition, we provide you with documentation and learning materials, as well as free catering and lodging during your stay.



REGISTER NOW!

Check with your local ARDEX Americas Sales Professional or visit www.ardexamericas.com to sign up for one of the ARDEX Technical Training programs. Training seminars are available throughout the US and Canada.

PROUD TRAINING PARTNER OF:

FCICA, TCNA, ASCC, INSTALL, NAFCT, TTMAC, CTEF, NTCA, NICFI, AND ICRI

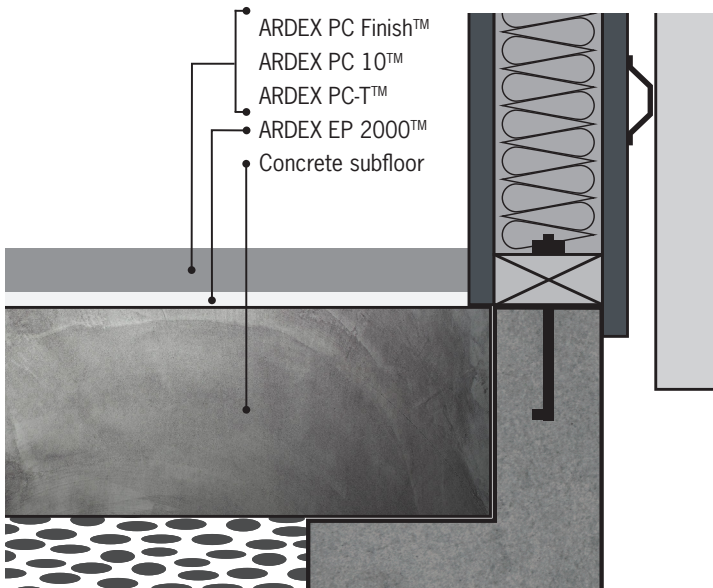
ARCHITECTURAL & ENGINEERING

ARDEX and our dedicated staff of Architectural Specialists offer solutions to directly support specification needs through specification writing assistance, proper product placement and confirmation of technical requirements. Other services include:

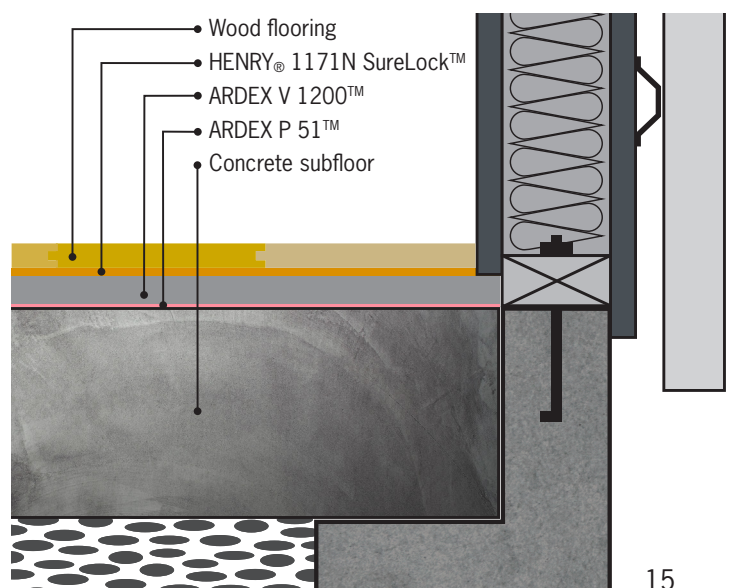
- Downloadable CSI-formatted specifications
- Products assembly CAD drawings
- LEED® qualifications through USGBC
- Support through MasterSpec® and BSD speclink-e®
- AIA continuing education
- BIM (Building Information Modeling) through BIMObject



Polished Topping Sample System



Wood Floor Sample System





Connect with ARDEX online! Read articles about industry trends, featured installations (like the one pictured) and connect with other ARDEX enthusiasts. You'll stay up-to-date on our upcoming events, like trade shows, demo days, and even educational webinars!





 **ARDEX Americas**
400 Ardex Park Drive
Aliquippa, PA 15001

 p: 724-203-5000


 www.ardexamericas.com
info@ardexamericas.com


 **ARDEX Canada**
#163 Buttermill Ave. Unit #8
Concord, ON L4K 3X87

 p: 905-673-2739

 www.ardex.ca
info@ardexamericas.com

 **ARDEX Latin America**
400 Ardex Park Drive
Aliquippa, PA 15001

 +52 (81) 1155-8167

 www.ardexamericas.com
contacto@ardexamericas.com



HENRY

BUILT BY
YOU
backed by **ARDEX**