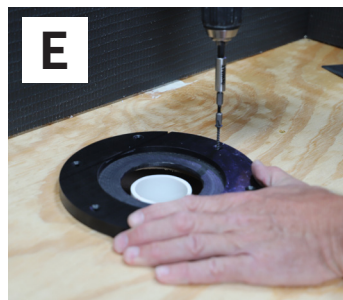
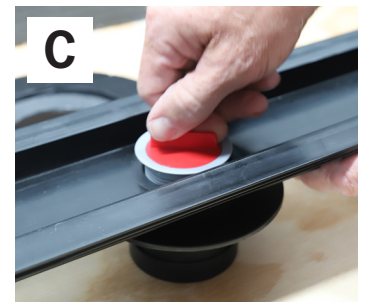


ARDEX TLT™ Linear Drain

Mud Bed Installation Guide

ASSEMBLE DRAIN:

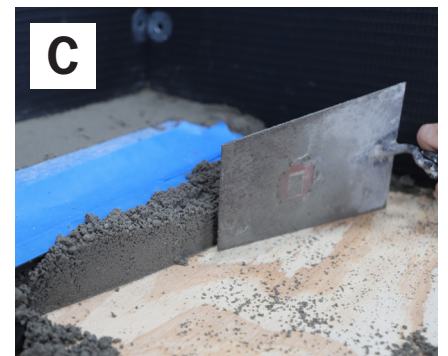
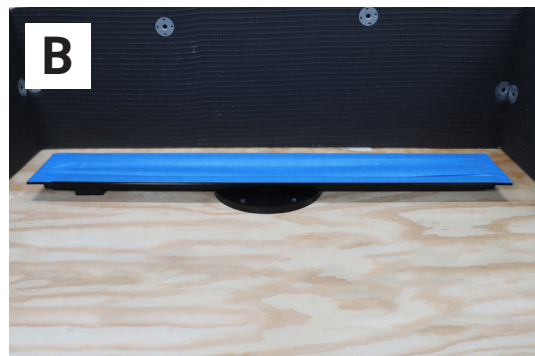
- (A) Insert threaded drain tube down through hole in trough
- (B) Place the down tube with rubber gasket under the trough and screw on to the threaded drain tube. Use red down tube installation tightening tool to tighten from the top
- (C) Leave red tightening tool in place until mud work is complete
- (D) Cut existing 2" drain pipe flush to existing floor
- (E) Install round center support disk, over the 2" pipe hole. Center the support disk over pipe. Fasten to subfloor with screws using pre-drilled holes
- (F) Install peel and stick supports on the bottom of the trough 1 1/2" in from both ends. Add a dab of ARDEX TLT™ 700 if necessary



MIX DECK MUD ACCORDING TO MANUFACTURERS INSTRUCTIONS

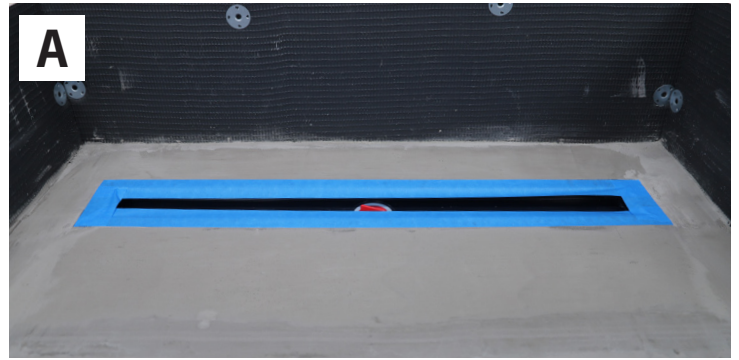
INSTALL LINEAR DRAIN

- (A) Insert linear drain trough into 2" pipe. Make sure the trough is level in both directions
- (B) Install Blue Tape around perimeter of trough flange to protect
- (C) Pack deck mud (like ARDEX A 38™ Rapid Set Screed) under trough to confirm it is well supported and check for level



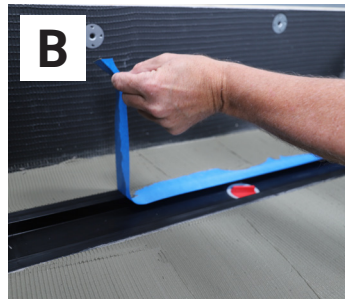
INSTALL MUD AND SCREED :

- (A) Using the top of the flange, screed mud (ARDEX A 38™ Rapid Set Screed) flush with flange of trough to desired thickness insuring a 1/4" slope per foot
- Let mud set up and cure.



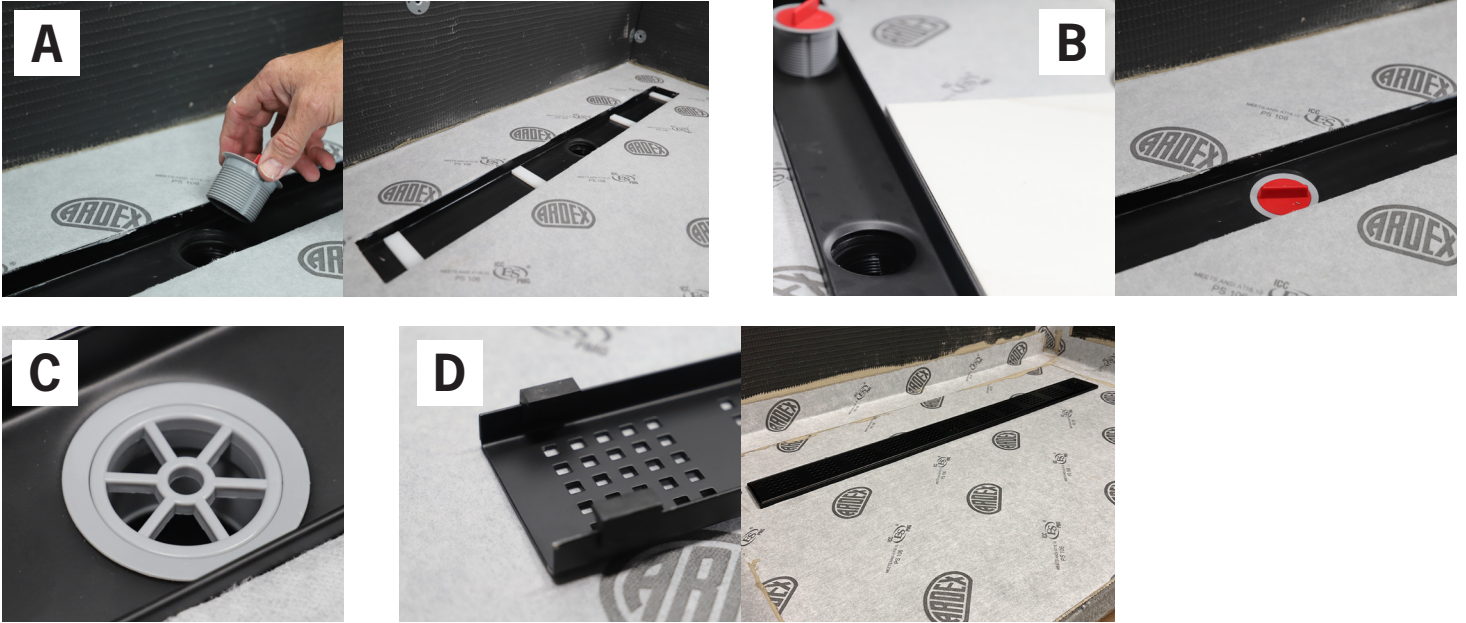
INSTALLING ARDEX TLT™ 716 WATERPROOFING MEMBRANE :

- Make sure the surface of the mud bed is flat and smooth
 - Mix up appropriate ARDEX tile mortar to high water range
 - Measure and cut ARDEX TLT™ 716 Waterproofing Membrane to the appropriate size
- (A) Trowel the ARDEX mortar on to the cured mud bed with a 1/4" x 3/16" V notch trowel
- (B) Remove blue tape from the perimeter of the flange
- (C) Install a bead of ARDEX TLT™ 700 on top of the trough flange perimeter
- (D) Place the ARDEX TLT™ sheet membrane over the troweled mortar and over the linear drain
- (E) Use the flat side of a trowel or a drywall mud tool to flatten the membrane and remove any air pockets
- (F) Use a utility knife and cut inside the trough around inside perimeter. Discard cut out piece of ARDEX TLT™ 716



INSTALLING DRAIN GRATE:

- (A) Using the red tightening tool, loosen and back out (remove) the threaded down tube. Place the appropriate self-adhesive adjustment spacers into the trough. Dry fit the grate cradle and adjust spacers to get the appropriate height according to the tile thickness.
- (B) Once height and spacers are set, screw the threaded drain tube through the grate cradle and trough and tighten down firmly.
- (C) Remove red tightening tool and install strainer.
- (D) Install drain grate using the appropriate drain grate supporting clips.



*ARDEX TLT™ Shower Bases + Integrated Drains are patent pending



tile & stone
Installation Systems

www.ardexamericas.com

BUILT BY
YOU
backed by **ARDEX**