

ARDEX ProDrain® Drainage System

ARDEX Exterior Tile & Stone Systems

Beautiful aesthetics, combined with the long-term durability of tile and stone has led to enhanced popularity for outdoor installations. Especially in today's health-conscious environment, outdoor living spaces are now even more desirable in residential, as well as commercial venues. However, exterior installations are subject to harsh weather and very difficult environments. Issues such as efflorescence, staining, discoloring and dis-bonding are commonplace with exterior installations. These problems are caused by sedentary and evaporating water and moisture.

ARDEX Exterior Tile & Stone Installation Systems features unique three-dimensional Capillary Passive Drainage Systems that manages rain and snow water by allowing the water to move freely through the system and then moving the water away from the installation. Architects, landscape designers, contractors and installation professionals can now confidently specify tile and stone in outdoor spaces without fear of the inherent risks associated with an exterior tile and stone installations.

ARDEX ProDrain® Drainage System

An innovative comprehensive water management system:

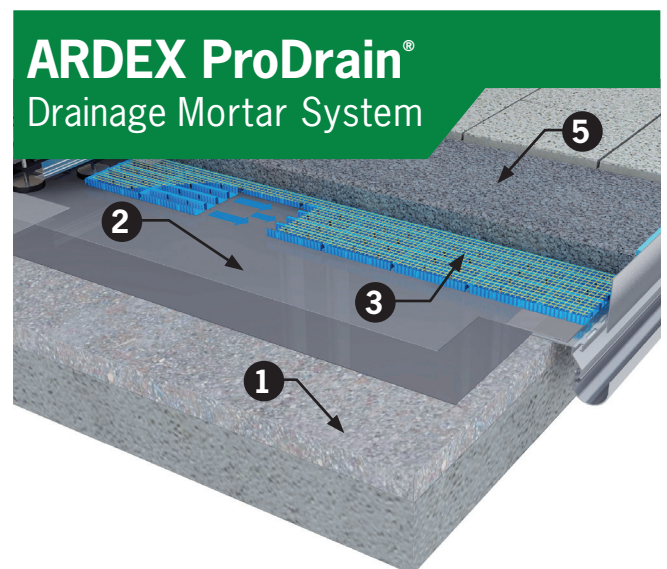
- ARDEX UE 190-8 ProDrain® Drainage Mat
- ARDEX Drainage Mortar
- ARDEX X 90 OUTDOOR™ MicroteC3 Tile and Stone Mortar
- ARDEX UD 146™ Edge Insulation Strip
- ARDEX UD 158™ Seam Reinforcement Tape
- ARDEX TLT™ 716 Waterproofing Membrane*

The ARDEX ProDrain® System significantly reduces the risks of efflorescence, staining, disbonding and discoloration of natural stone and tile, extending the life of installations on patios, decks and balconies subjected to harsh climates and weather conditions.

Installation

1. Begin with a sound and solid substrate pre-sloped 1.5 to 2% grade (ARDEX AM 100™ Smoothing and Ramping Mortar can be used to create slope)
2. Install ARDEX TLT™ 716 Waterproofing Membrane*
3. ARDEX ProDrain® Drainage Mat is installed loose laid over the ARDEX TLT™ 716 Membrane
4. Install ARDEX UD 146™ Edge Insulation Strip along the perimeter of the attached structure (not shown)
5. ARDEX Drainage Mortar is installed at a minimum of 2" (51 mm) (Hydrophobic, deep bed mortar that allows water to pass through freely into the ProDrain® Mat) - additional aggregate is required
6. Flat trowel ARDEX X 90 OUTDOOR™ on the back of the tile and place wet set into the ARDEX Drainage Mortar

*ARDEX TLT™ 716 Waterproofing Membrane and Vapor Retarder is **NOT** a replacement for waterproofing protection over occupied spaces. Applications over occupied living spaces require an existing, **intact primary roofing membrane** prior to the installation of an ARDEX Exterior System. ARDEX TLT™ 716 is to provide protection against vapor transmission from the substrate. For additional details, contact the ARDEX Technical Department at 1-888-512-7339.



www.ardexamericas.com

BUILT BY
YOU
backed by **ARDEX**

ARDEX Knows Tile & Stone Inside and Out!

ARDEX ProFin™ Profiles and ARDEX ProDrain® Drain Grates

Height-adjustable drains and aluminum profiles complete the aesthetic finish of your outdoor installation.

ARDEX ProFin™ Profiles, Facing Plates and Corners

High-quality aluminum, powder coated profiles and accessories provide a decorative, finished look to the ARDEX Exterior Installation Systems and functionally provide a drip edge that sheds water from the installation to help keep the ARDEX ProDrain® and Watec® Drainage Mat channels free from debris.

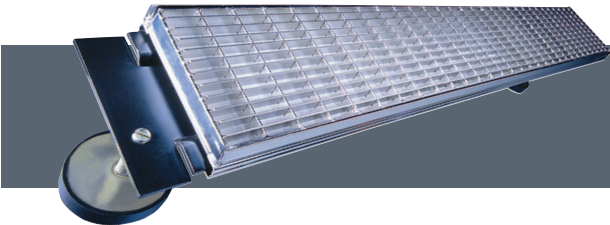


- High-quality aluminum powder coated profiles and accessories



ARDEX ProDrain® Drain Grates

Height-adjustable drain grates strategically placed in front of doorways and floor-level windows to prevent water seepage to vulnerable interior areas. The drain grates allow the flow of water or melting snow directly into the drainage mat.



- Adjustable sliding feet and legs
- Integral dirt trap prevents debris buildup

Built by You, Backed by ARDEX™!

ARDEX Exterior Tile & Stone Installation Systems are complete top to bottom, single source systems that provide maximum protection in the most demanding and complex environments. Whether its freeze thaw, hot temperatures or high-humidity weather conditions, ARDEX delivers the right system to meet your customized exterior installation needs.

In 2002, these systems were incorporated into the standards for external floor coverings by the German Construction Industry Association (ZDB). These systems have enjoyed 20+ years of successful exterior tile & stone installation experience throughout Europe, now combined with ARDEX high-performance tile and stone installation products. ARDEX is proud to introduce these unique, time-tested, comprehensive system solutions to the Americas, and confidently backed by the ARDEX 5-Year Exterior Tile & Stone Installation Systems Limited Warranty.

For more information on ARDEX Exterior Tile & Stone Installation Systems please contact your local ARDEX Sales Professional or visit www.ardexamericas.com.



tile & stone
Installation Systems

www.ardexamericas.com

BUILT BY
YOU
backed by ARDEX